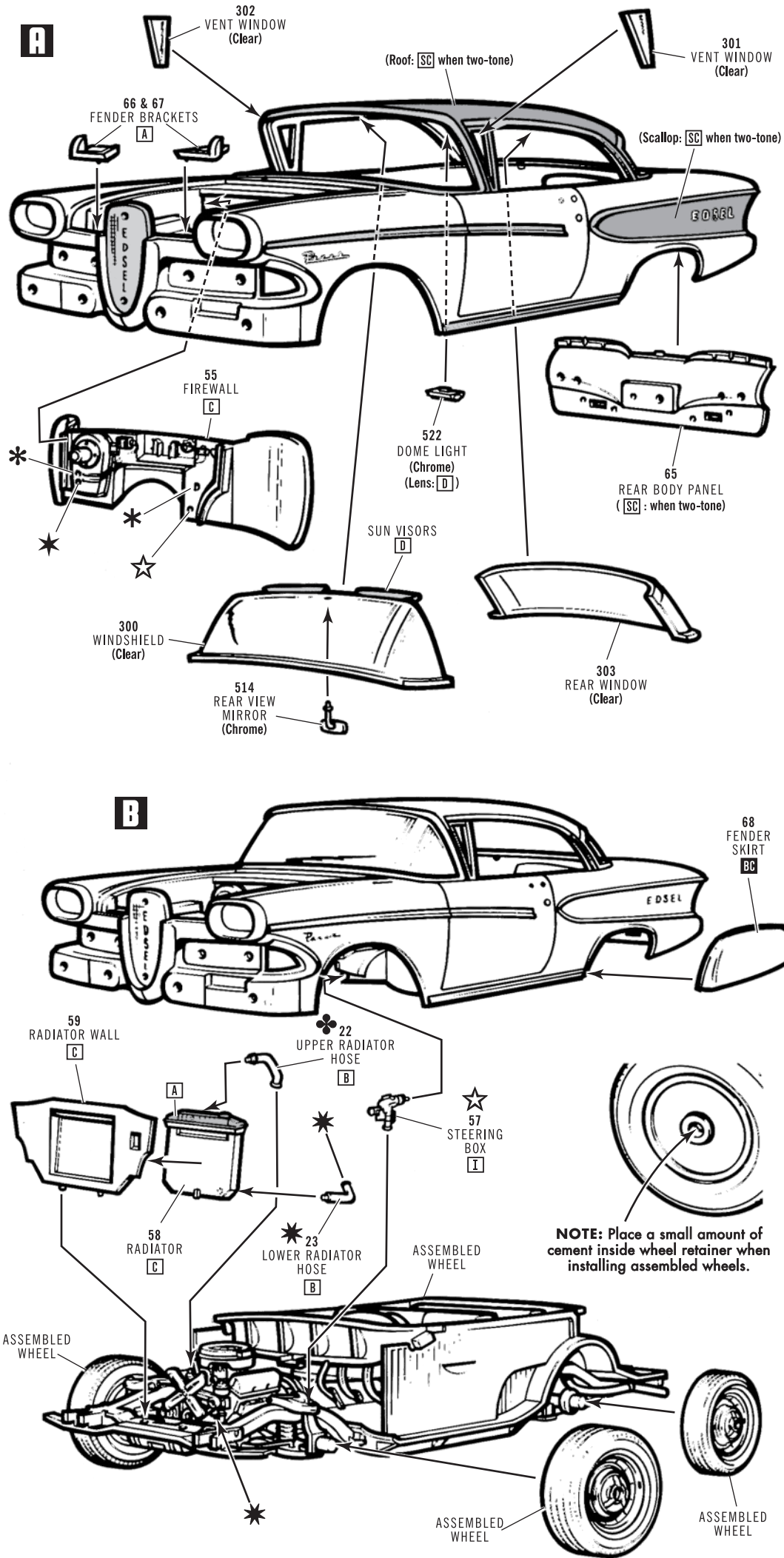


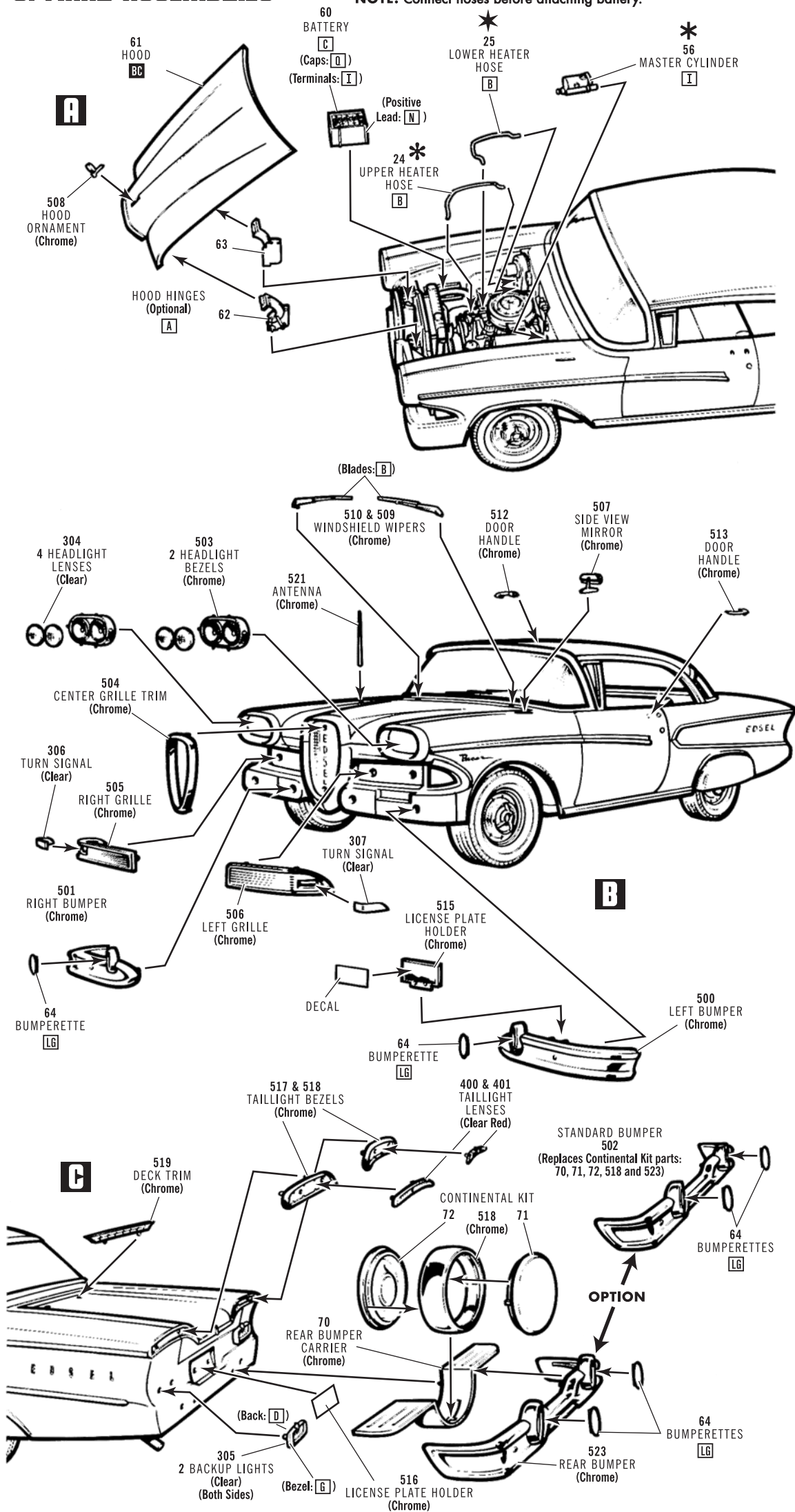
5. BODY

NOTE: Paint trim, door locks and emblems [E]. Paint interior headliner [D].



6. FINAL ASSEMBLIES

NOTE: Connect hoses before attaching battery.



amt  
A1087-200

CONTINENTAL  
KIT INCLUDED

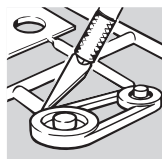
'58 EDSEL PACER  
1/25 SCALE  
MODEL KIT

IMPORTANT

Before you begin to assemble your model kit, study the instructions carefully. This will help you to familiarize yourself with the part locations as you proceed. Prior to cementing parts together, be sure to "TEST FIT" them in order to assure proper alignment and also to check for excess "FLASH" that may occur along parting lines. Use a sharp hobby knife or file to remove flash if necessary. If you wish to paint your model, various sub-assemblies and components should be painted before any parts are attached. During assembly, you may note that the recommended color is stated after the part name. This model kit is molded from the finest high-impact styrene plastic. Use only paints and cements which are specifically formulated for styrene. Because the cement will only adhere to bare plastic, it is necessary to remove any paint or "plating" from the area to which the cement is to be applied.

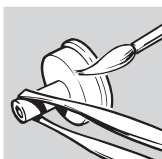
Read all labels and warnings carefully before starting.

RECOMMENDED TOOLS



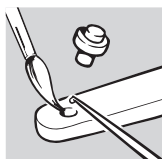
HOBBY KNIFE

Use a sharp hobby knife to remove parts from the trees. The knife may also be used to remove parting lines and flash.



TWEEZERS

Use tweezers to hold small parts during assembly, painting and when applying cement.



CEMENT

We recommend the use of liquid polystyrene cement. Apply with a fine brush or toothpick. Use cement sparingly or a sloppy job will result.

PAINT COLORS

[A]	Black
[B]	Flat Black
[C]	Semi-Gloss Black
[D]	White
[E]	Flat White
[F]	Silver
[G]	Chrome (Bright Silver)
[H]	Aluminum
[I]	Steel
[J]	Brass
[K]	Gold

[L]	Amber
[M]	Transparent Amber
[N]	Red
[O]	Transparent Red
[P]	Orange
[Q]	Yellow
[R]	Tan
[S]	Brown
[T]	Lt. Blue
[U]	Med. Blue
[V]	Dark Blue

[W]	Transparent Blue
[X]	Lt. Green
[Y]	Dark Green
[AC]	Accent Color
[SC]	Secondary Color
[IC]	Interior Color
[BC]	Body Color
[LG]	Light Gray
▲	Semi-Gloss
▲	Gloss
▲	Metallic

EXTERIOR COLORS

Standard Colors Include: Ice Green, Spring Green, Spruce Green Metallic, Powder Blue, Horizon Blue, Royal Blue Metallic, Turquoise, Jet Black, Silver Gray Metallic, Jonquil Yellow, Charcoal Brown Metallic, Ember Rod, Sunset Coral, Frost White and Driftwood.

INTERIOR COLORS

Standard Colors Include: Dark Brown, Coral, Medium Green, Medium Blue, Red and Turquoise.

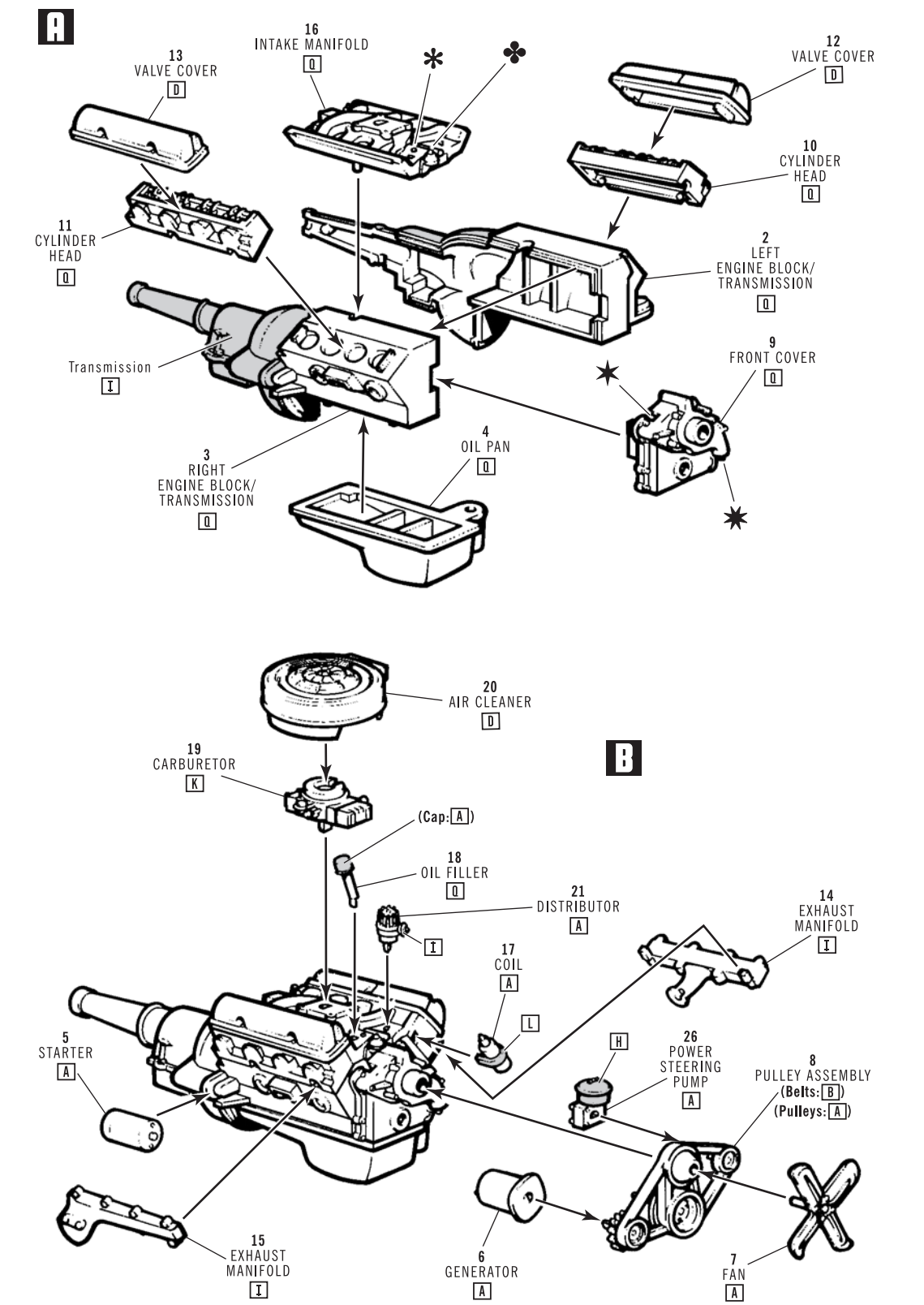
It is recommended that you search the internet for additional color references and details.



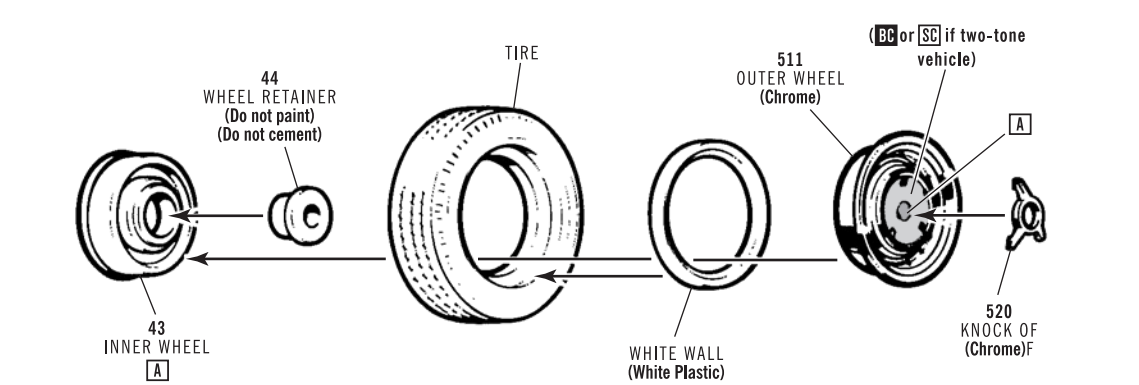
Ford Motor Company Trademarks and Trade Dress used under license to Round 2, LLC. AMT and design is a registered trademark of Round 2, LLC. ©2018 Round 2, LLC, South Bend, IN 46628 USA. Product and packaging designed in the USA. Made in China. All rights reserved.



I. ENGINE



2. TIRES & WHEELS



1958 EDESL COLOR COMBINATIONS

INTERIOR COLORS

	OVERALL	ACCENT	ACCENT 2	CUSHION WELTING & BUTTONS
A	Dark Brown	White		Chrome (Bright Silver)
B	Coral	White		Chrome (Bright Silver)
C	Medium Green	Light Green	Dark Green	Chrome (Bright Silver)
D	Medium Blue	Light Blue	Dark Blue	Chrome (Bright Silver)
E	Red	White		Chrome (Bright Silver)
F	Turquoise	White		Chrome (Bright Silver)

BODY COLORS & TWO-TONE COMBINATIONS

SECONDARY COLORS

Body can be a single color or accented with a Secondary Color.

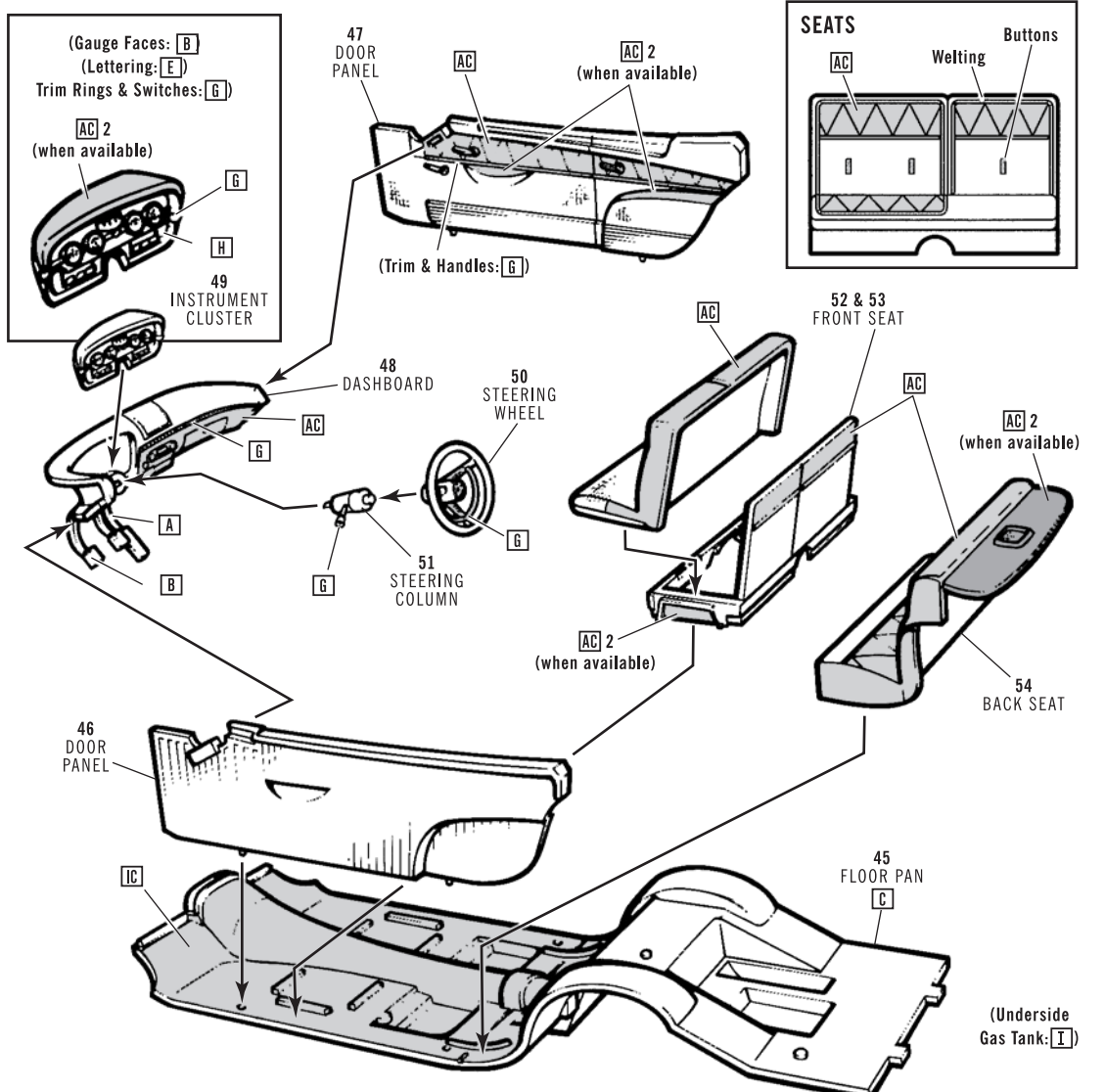
Apply Secondary Colors to Roof & Quarter Scallop, Roof only, or Scallop only.

	Ice Green	Spring Green	Spruce Green Metallic	Powder Blue	Horizon Blue	Royal Blue Metallic	Turquoise	Jet Black	Silver Gray Metallic	Jonquil Yellow	Charcoal Brown Metallic	Ember Red	Sunset Coral	Frost White	Driftwood	Snow White	Solid Body Color Interiors
Ice Green																	
Spring Green																	
Spruce Green Metallic	C																
Powder Blue																	
Horizon Blue																	
Royal Blue Metallic																	
Turquoise																	
Jet Black																	
Silver Gray Metallic																	
Jonquil Yellow																	
Charcoal Brown Metallic																	
Ember Red																	
Sunset Coral																	
Frost White																	
Driftwood																	
Snow White																	
Solid Body Color Interiors																	

Letter indicates interior for selected Two-Tone Combination or Solid Body Color. See Interior Colors chart.

3. INTERIOR

NOTE: Paint interior the Overall Color listed above. Paint Accent Colors and details where indicated. Where Accent 2 is not available, use Overall Color.



4. CHASSIS

