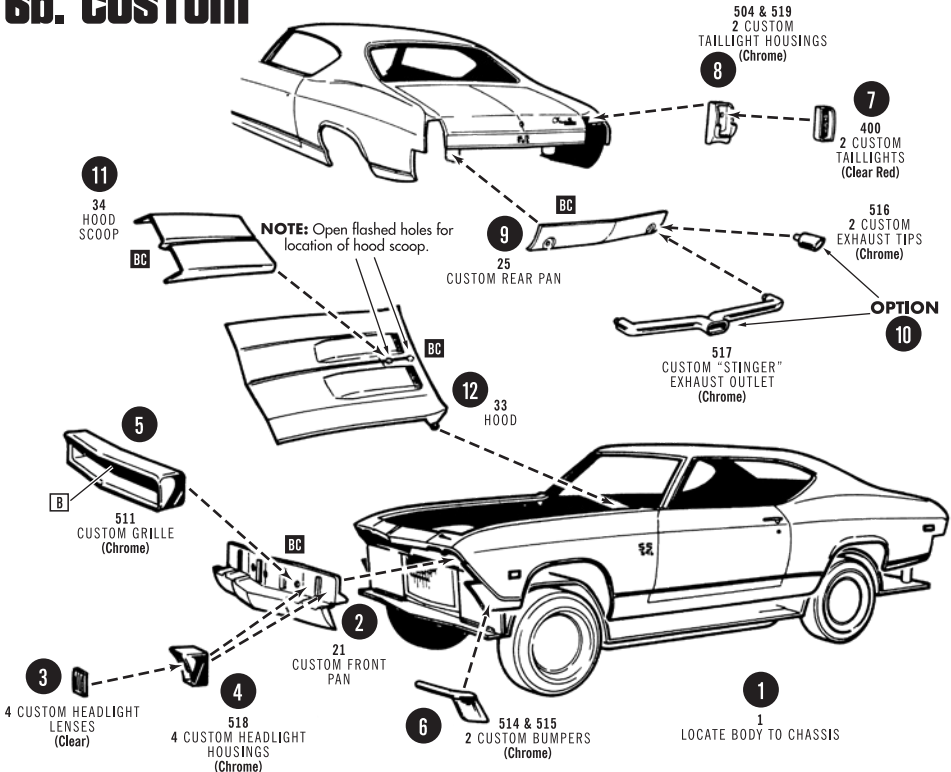
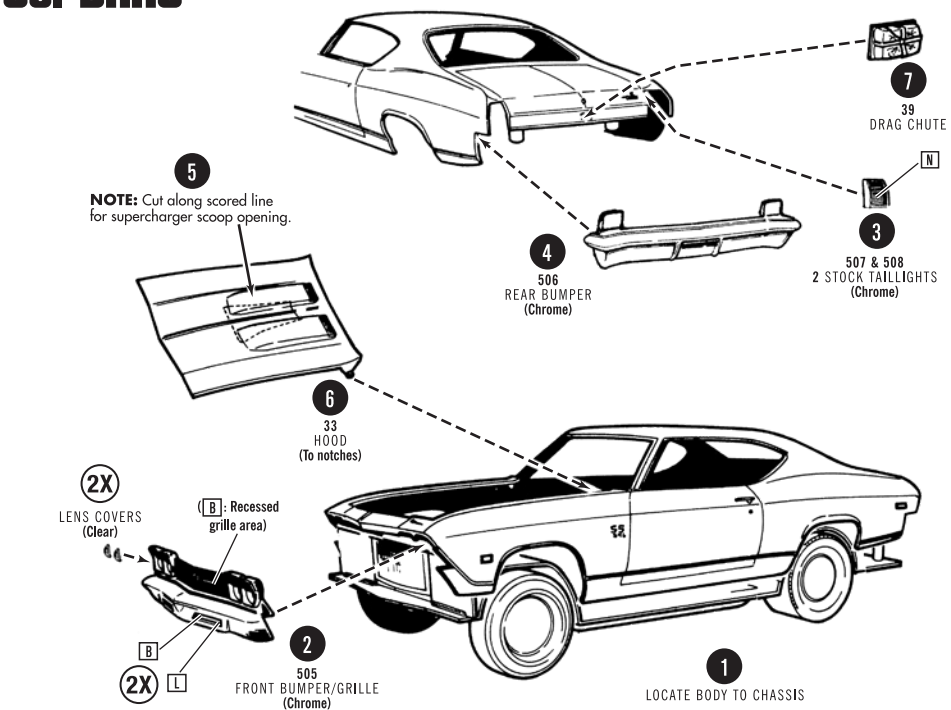


6b. CUSTOM



6c. DRAG



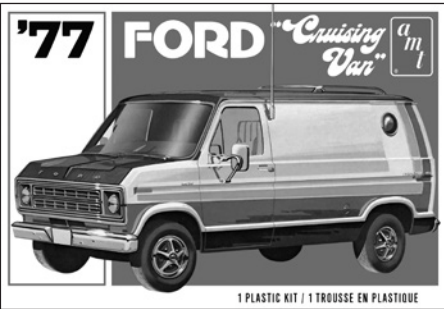
# MORE GREAT KITS FROM THE KATS AT



## COLLECT AND BUILD 'EM ALL!



AMT1063M/12: 1960 Chevrolet® Custom Fleetside Pickup with Go Kart



AMT1108M/12: 1977 Ford Cruising Van



AMT1119M/12: 1955 Chevy® Bel Air Sedan



AMT1118M/12: 1971 Plymouth Duster 340



AMT1121/12: 1965 Riviera™ — George Barris



AMT1105/12: 1969 Olds™ 442 W-30



# 1969 CHEVELLE™ SS™ 396

1/25 MODEL KIT

## IMPORTANT! READ THIS BEFORE BEGINNING

Before you begin to assemble your model kit, study the instructions carefully. This will help you to familiarize yourself with the part locations as you proceed. Prior to cementing parts together, be sure to "TEST FIT" them in order to assure proper alignment and also to check for excess "FLASH" that may occur along parting lines. Use a sharp hobby knife or file to remove flash if necessary. If you wish to paint your model, various sub-assemblies and components should be painted before any parts are attached. During assembly, you may note that the recommended color is stated after the part name. This model kit is molded from the finest high-impact styrene plastic. Use only paints and cements which are specifically formulated for styrene. Because the cement will only adhere to bare plastic, it is necessary to remove any paint or "plating" from the area to which the cement is to be applied.

## PAINT COLORS

A	Black	Q	Yellow
B	Flat Black	R	Tan
C	Semi-Gloss Black	S	Brown
D	White	T	Lt. Blue
E	Flat White	U	Med. Blue
F	Silver	V	Dark Blue
G	Chrome (Bright Silver)	W	Ford Motor Blue
H	Aluminum	X	Lt. Green
I	Steel	Y	Dark Green
J	Brass	Z	Gray
K	Gold	AA	Chevy® Orange
L	Amber	IC	Interior Color
M	Transparent Amber	BC	Body Color
N	Red	▲	Semi-Gloss
O	Transparent Red	△	Gloss
P	Orange	▲	Metallic

## EXTERIOR COLORS

Standard Colors Include: Tuxedo Black, Ermine White, Grotto Blue, Fathom Blue, Island Teal, Ash Gold, Grecian Green, Tripoli Turquoise, Teal Blue, Cordovan Maroon, Seafrost Green, Matador Red, Palomino Ivory, Sequoia Green, and Butternut Yellow.

## INTERIOR COLORS

Black, Blue, Gold, Parchment/Black, Teal and Red.

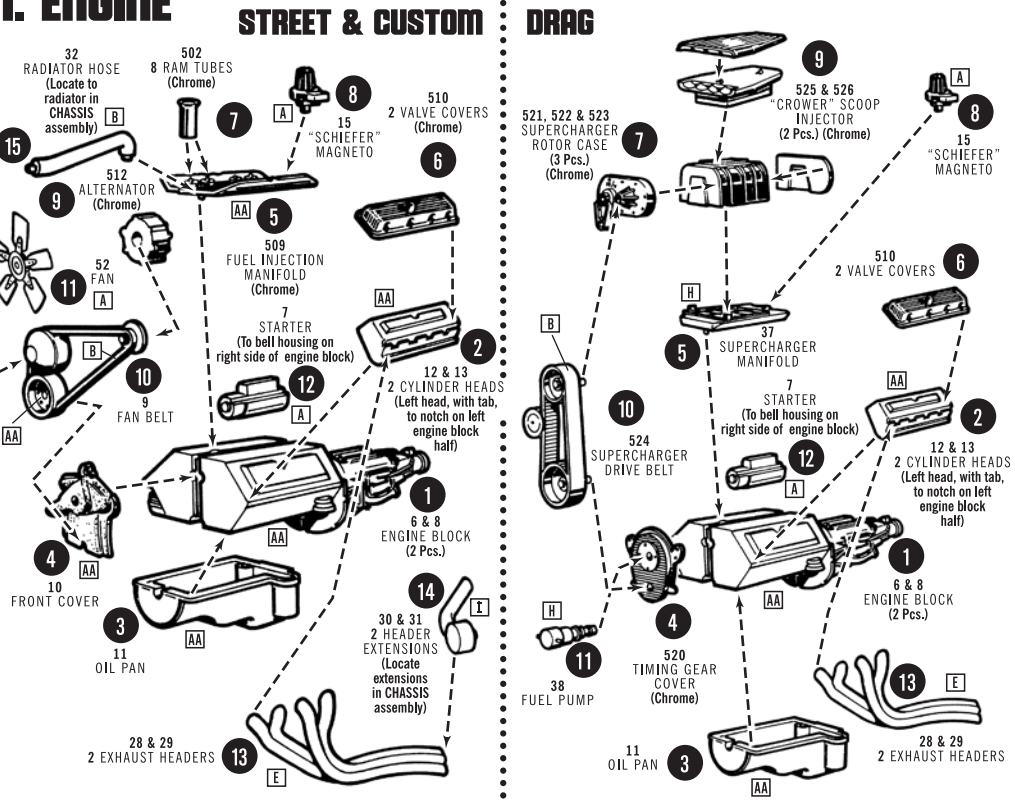
It is recommended that you search the internet for additional color references and details.



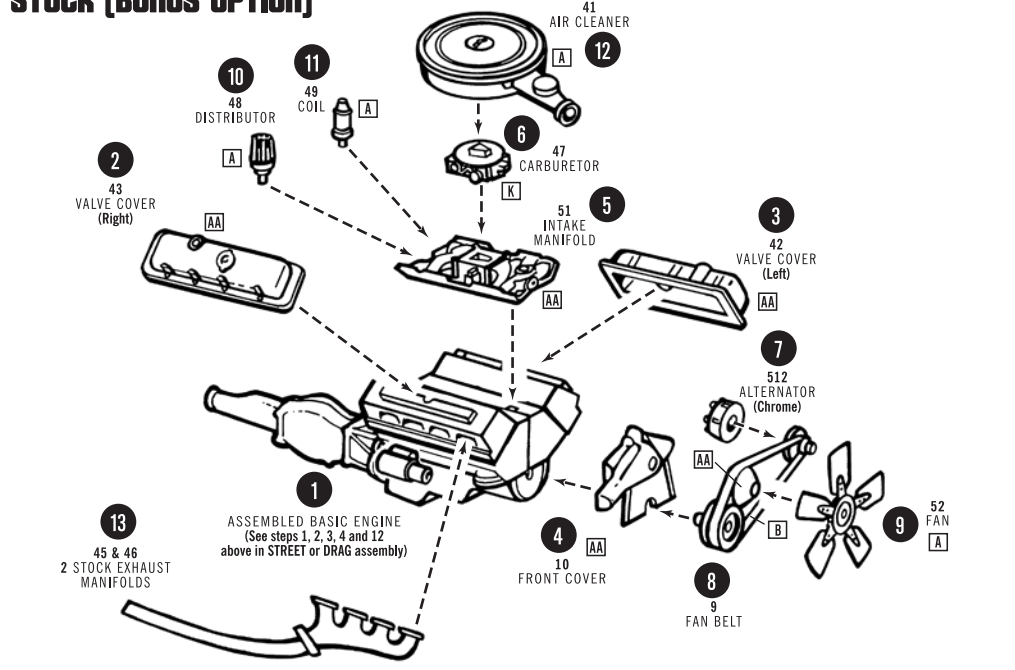
round2models.com

GENERAL MOTORS Trademarks used under license to Round 2, LLC. Ford Motor Company Trademarks and Trade Dress used under license to Round 2, LLC. Plymouth and related logos, vehicle model names and trade dress are trademarks of FCA US LLC and used under license by Round 2 LLC. ©2019 FCA US LLC. George Barris, Barris Kustom Ind., are registered trademarks of Barris Kustom Ind. And is granted under license to Round 2 LLC. www.barris.com. Firestone and F Shield Logo are registered trademarks of BFS Brands, LLC and are used with permission. AMT and design is a registered trademark of Round 2, LLC. ©2019 Round 2, LLC, South Bend, IN 46628 USA. Product and packaging designed in the USA. Made in China. All rights reserved.

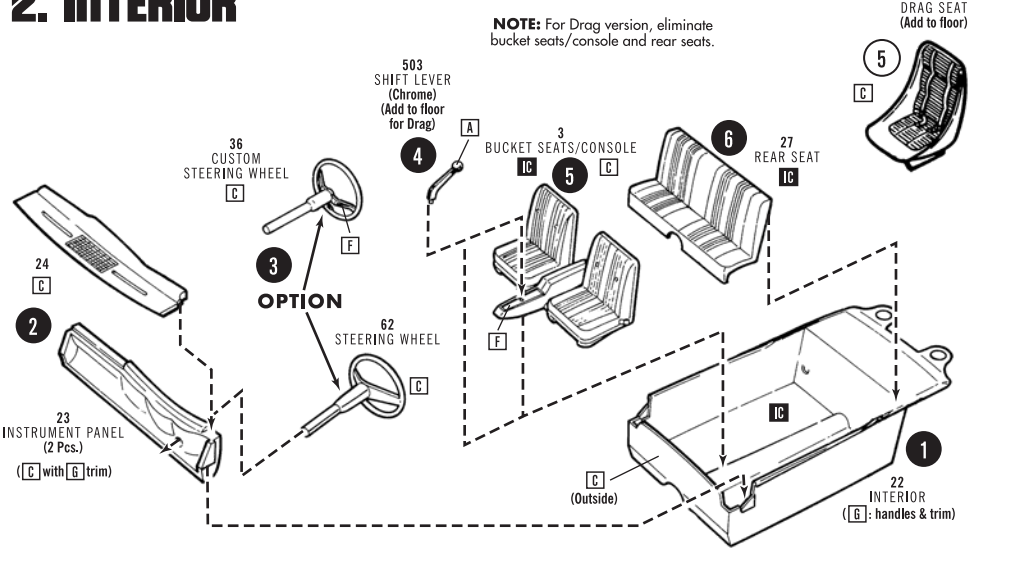
1. ENGINE



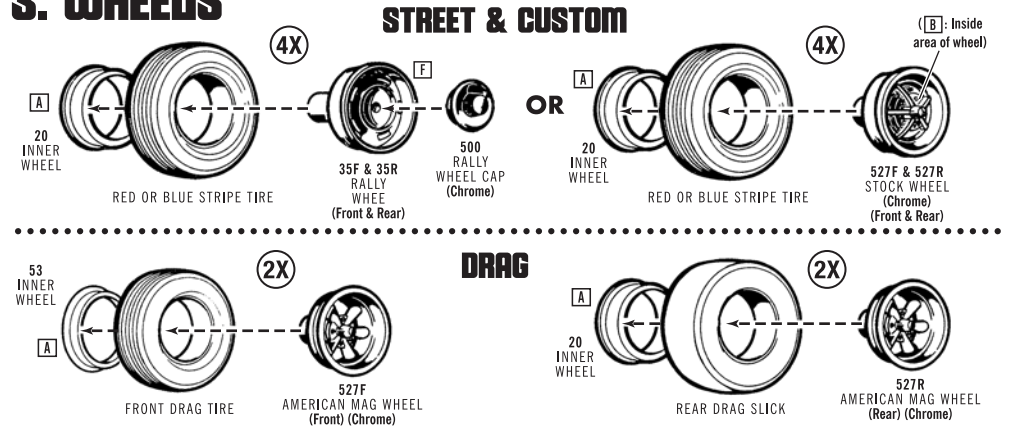
STOCK (BONUS OPTION)



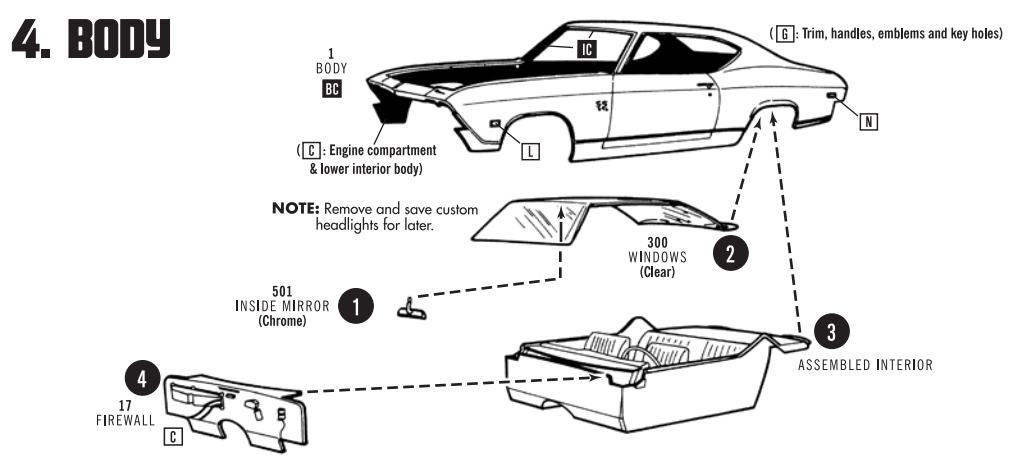
2. INTERIOR



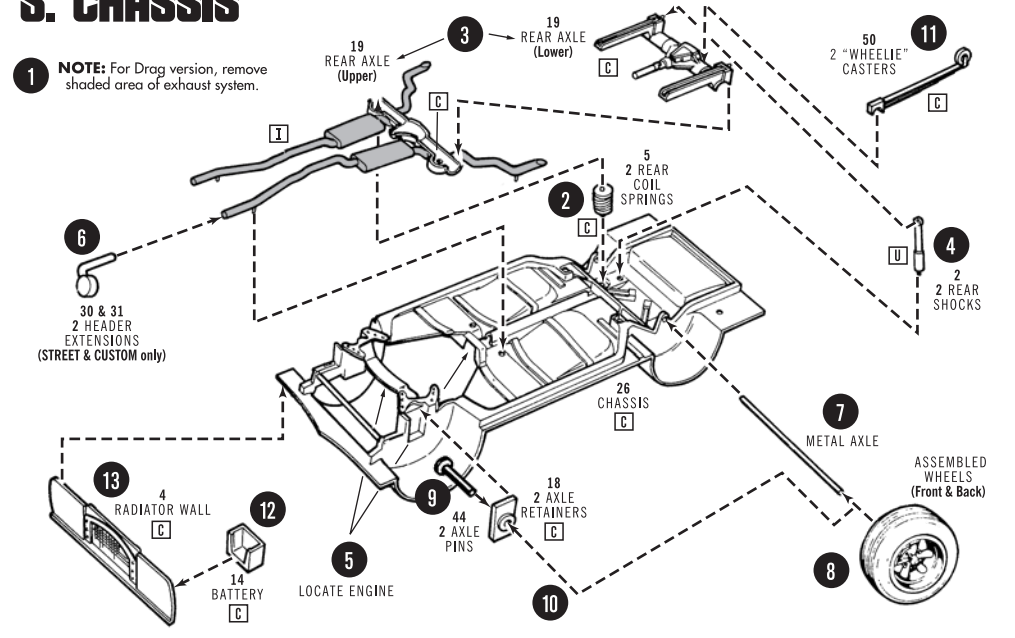
3. WHEELS



4. BODY



5. CHASSIS



6a. STREET

