

MORE GREAT KITS FROM



AMT898 & AMT912 - 1969 COUGAR ELIMINATOR
AVAILABLE IN WHITE OR ORANGE PLASTIC



AMT882 - 1953 FORD PICKUP TRUCK

EXTERIOR COLORS

Standard Colors Include: Raven Black, Arcadian Blue, Nightmist Blue, Antique Bronze, Candy Apple Red, Emberglo, Silver Blue, Dark Turquoise, Signal Flare Red, Dark Executive Gray, Sahara Beige, Wimbledon White, Ivy Green, Tahoe Turquoise, Vintage Burgundy, Sauterne Gold (Sage Gold), Silver Frost, Springtime Yellow

INTERIOR COLORS

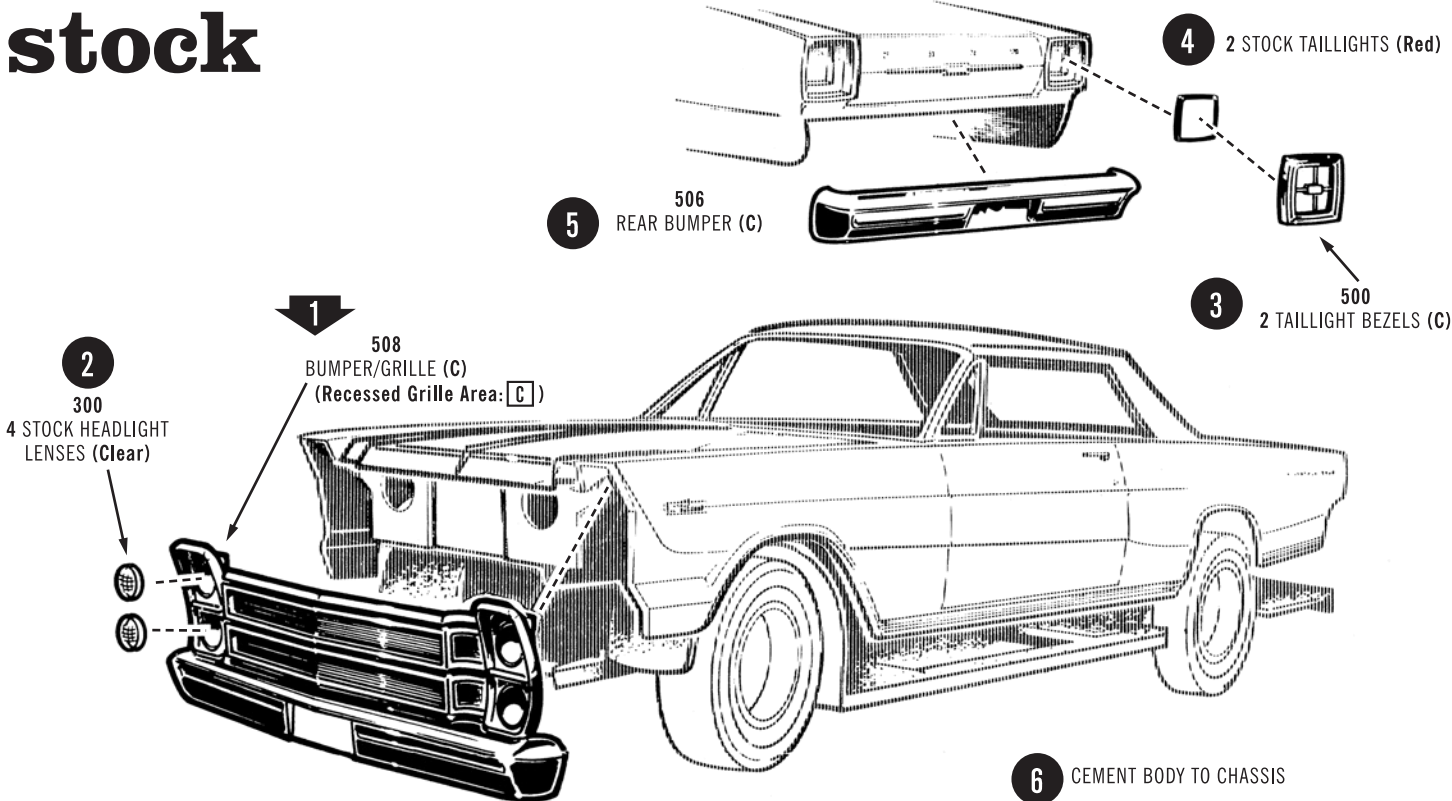
Blue, Emberglo (Brown), Red, Black, Aqua, Ivy Gold, Parchment

PAINT COLORS

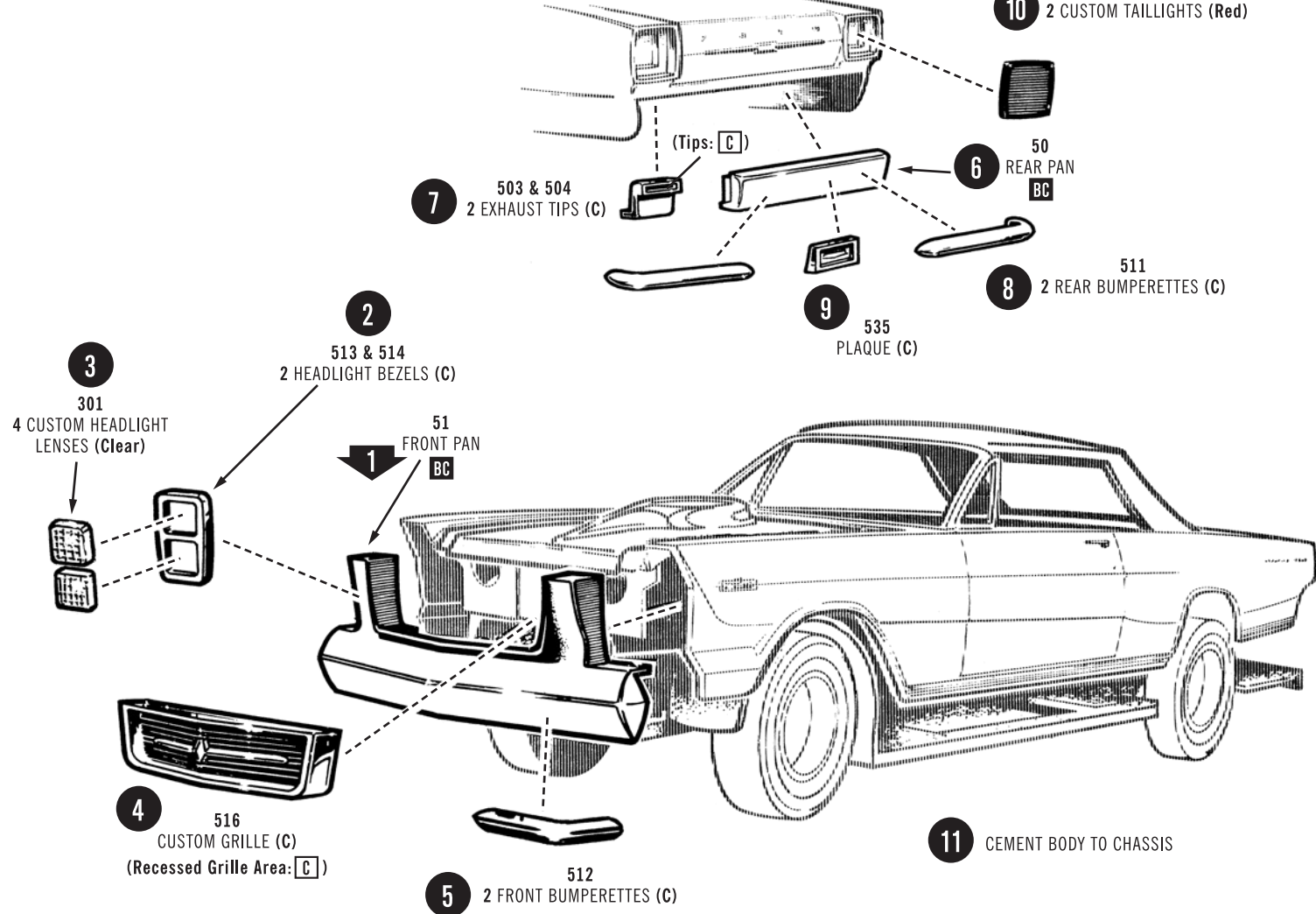
A	Black	Q	Yellow
B	Flat Black	R	Tan
C	Semi-Gloss Black	S	Brown
D	White	T	Lt. Blue
E	Flat White	U	Med. Blue
F	Silver	V	Dark Blue
G	Chrome (Bright Silver)	W	Transparent Blue
H	Aluminum	X	Lt. Green
I	Steel	Y	Dark Green
J	Brass	Z	Gray
K	Gold	AA	Purple
L	Amber	IC	Interior Color
M	Transparent Amber	BC	Body Color
N	Red	▲	Semi-Gloss
O	Transparent Red	△	Gloss
P	Orange	△	Metallic

FINAL ASSEMBLIES

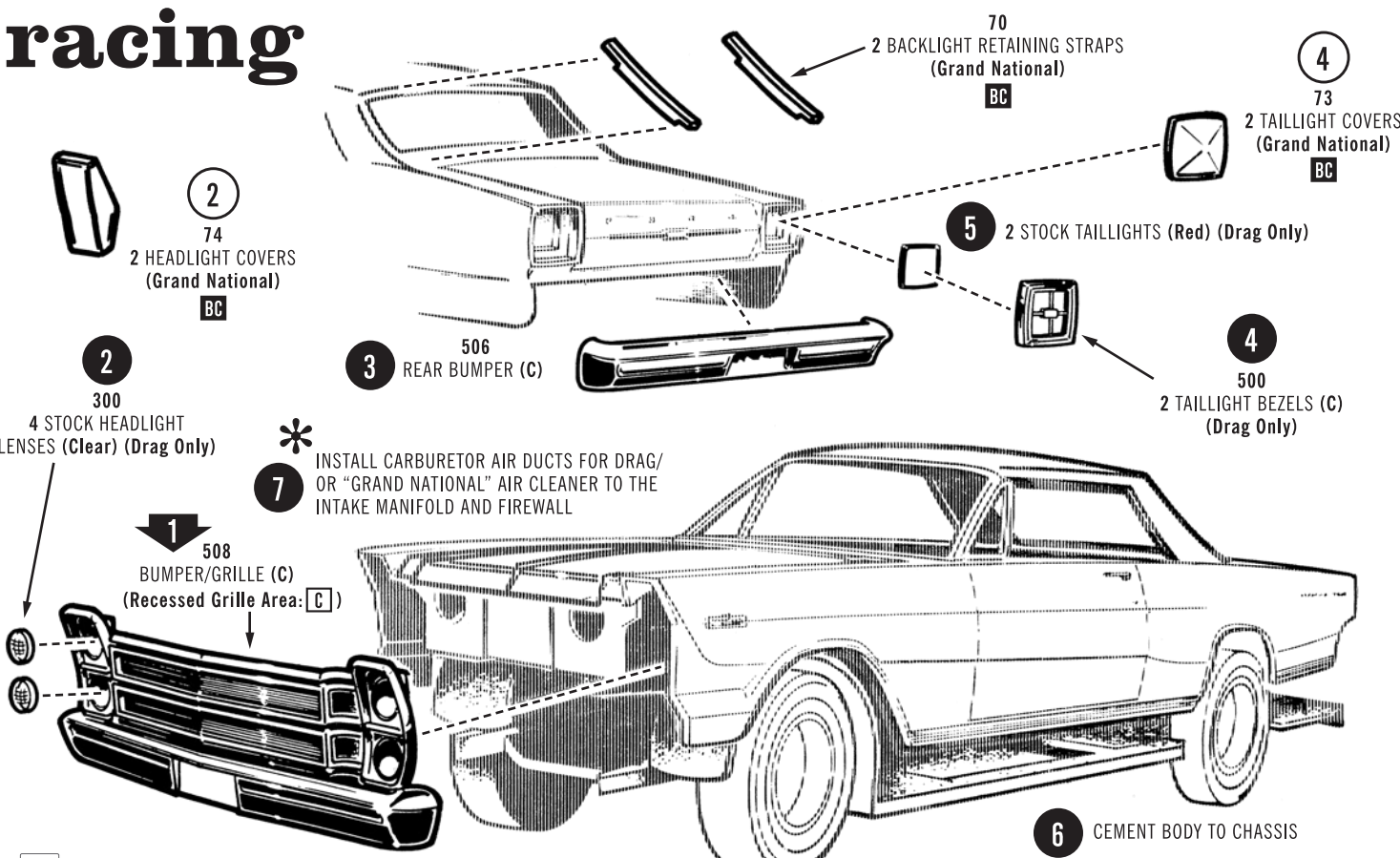
stock



custom



racing



Ford Motor Company Trademarks and Trade Dress used under license to Round 2, LLC. Goodyear (and wing foot design) and Eagle are trademarks of The Goodyear Tire & Rubber Company, Akron, Ohio USA used under license by Round 2, LLC. Firestone and F Shield Logo are registered trademarks of BFS Brands, LLC and are used with permission. Other names and trademarks used under license to Round 2, LLC or by permission. AMT and design is a registered trademark of Round 2, LLC. ©2015 Round 2, LLC, South Bend, IN 46628 USA. Product and packaging designed in the USA. Made in China. All rights reserved.

1966

FORD HARDTOP
GALAXIE 500
7-LITRE



1/25 SCALE

READ THIS BEFORE YOU BEGIN

This kit may be built more than one way. Look over this instruction sheet carefully before you begin building. You may decide to combine parts from the different versions shown, or use parts from other AMT® kits. After you've planned your car, follow the assembly instructions and "test-fit" the parts without cementing. This will familiarize you with the location of parts.
For the best results, the various sub-assemblies and components should be painted before any chrome parts are attached. For example: when attaching non-chrome body accessories, it is best to cement them in place

and paint the body as a unit.
AMT® kits are molded from the finest high-impact styrene plastic. Use only paint and cement made for styrene. Trim excess plastic from parts before joining. When attaching "chrome" parts, scrape plating away where cement is to be applied. Use just enough cement to join parts, and be careful not to smear cement on exposed surfaces.
Built according to the instructions on this sheet, you should have no trouble assembling your kit. Just FOLLOW THE NUMBERS, as parts are numbered in order of assembly. NOTE: (C) indicates "chrome" parts.



BASIC ASSEMBLIES

1. engine

(Cement To Firewall In Final Racing)

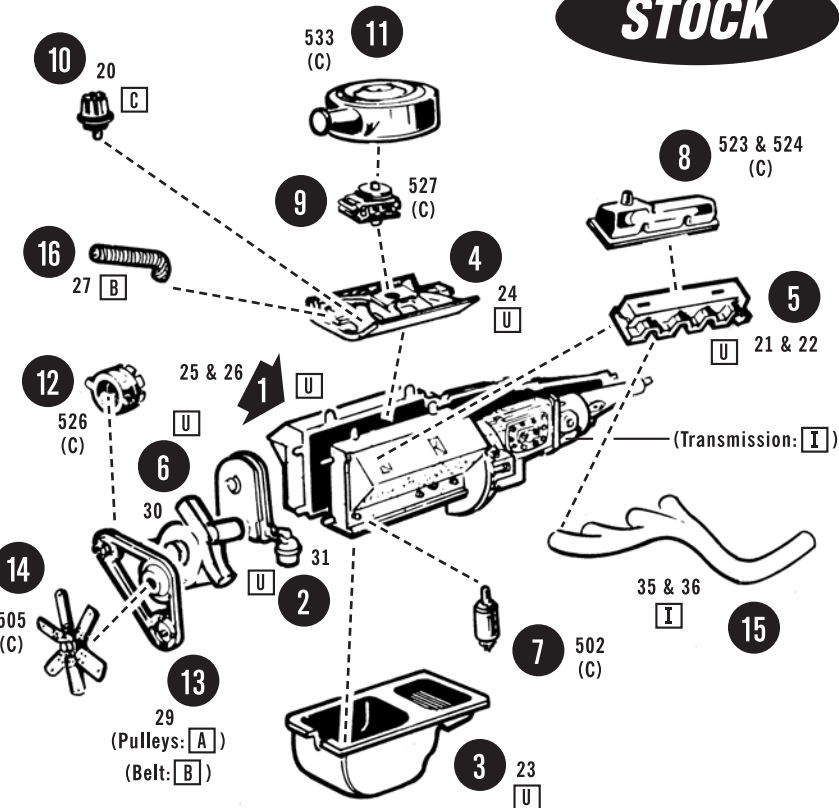
* 17

C

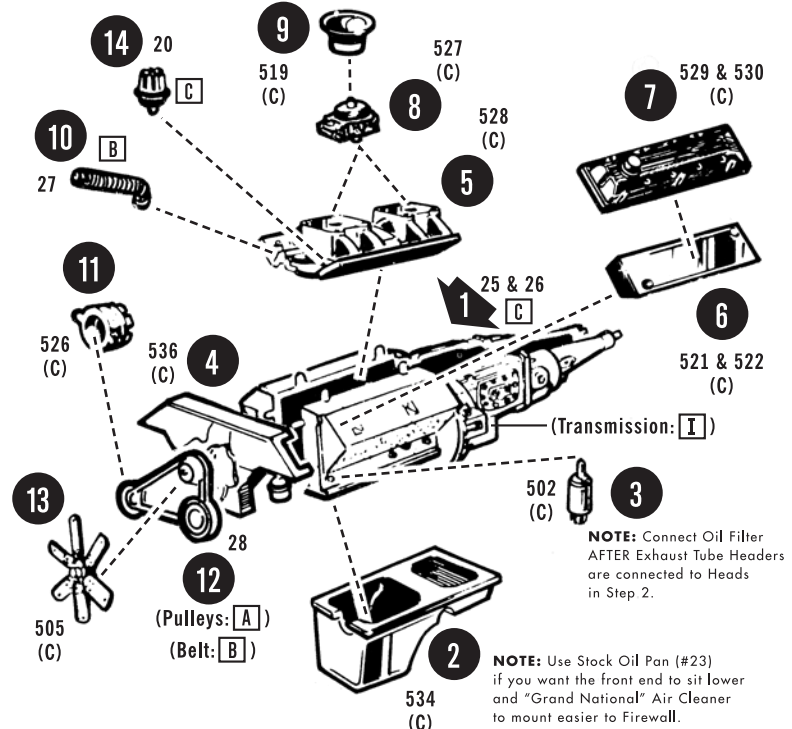
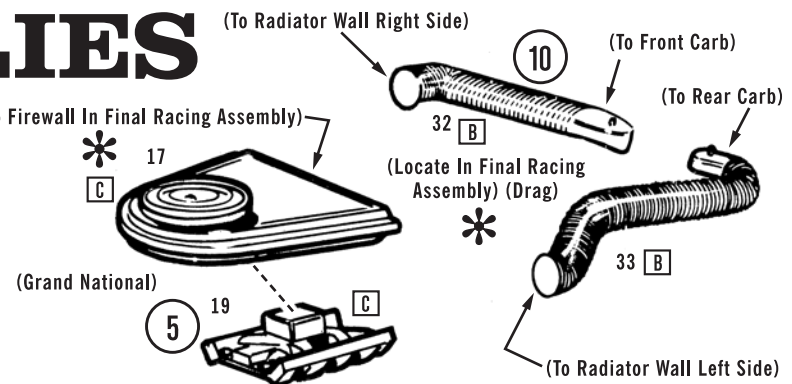


The drawing shows a detailed view of a car chassis. The engine is at the front, connected to the firewall. Various components like the fuel tank, battery, and suspension are shown. The chassis is labeled with various parts and dimensions. The drawing is a top-down view, with the engine at the front and the firewall at the rear. The chassis is labeled with various parts and dimensions.

OPTIONAL

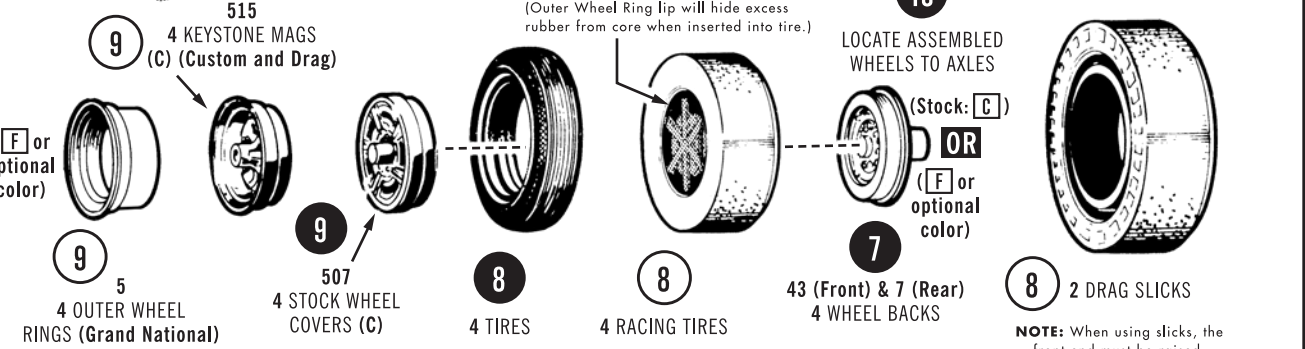
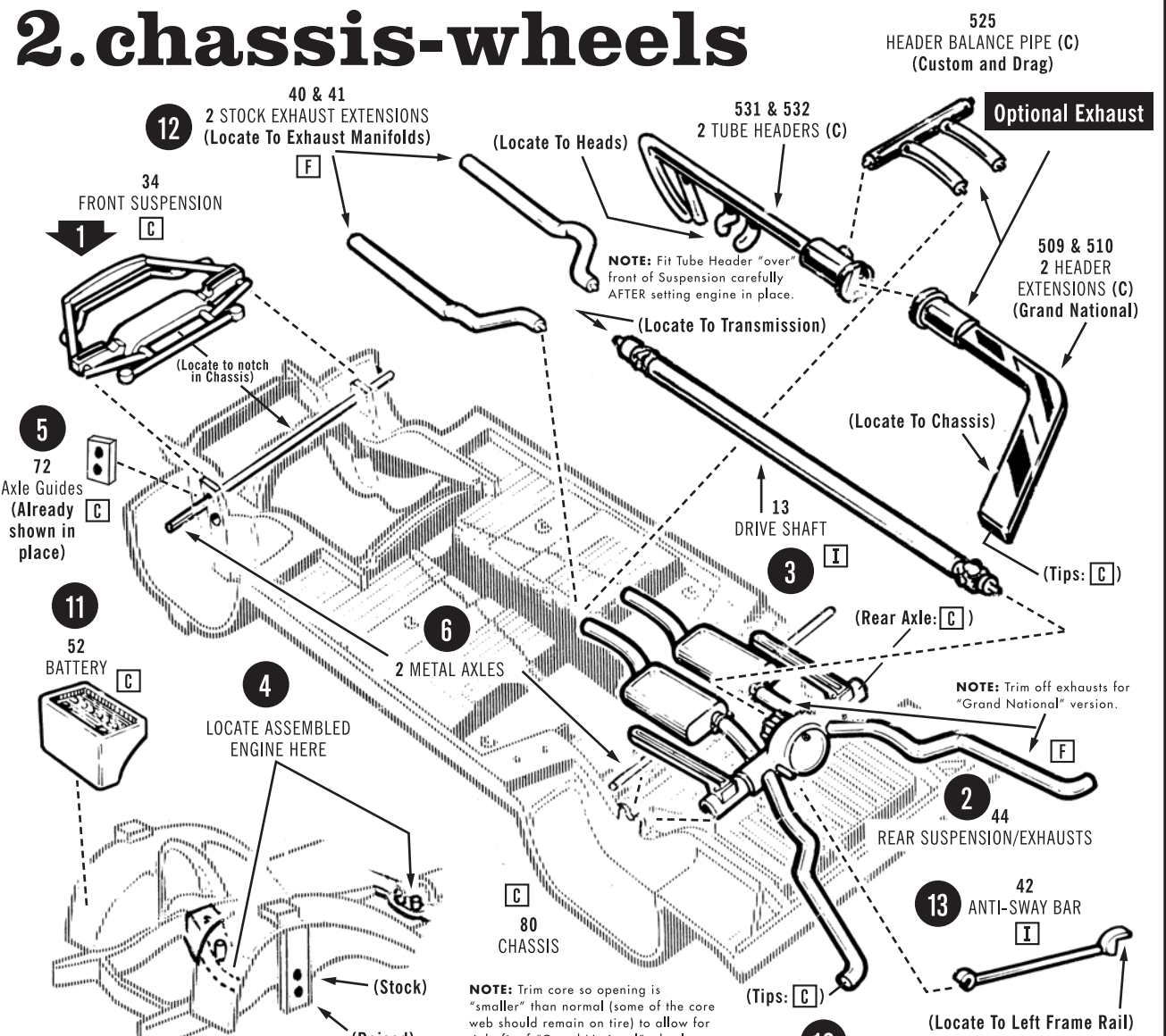
STOCK

1. Cement the **Engine Block** together. 2. **Front Cover** to Block. 3. **Oil Pan** to Block. 4. **Intake Manifold** to Block. 5. 2 **Cylinder Heads** to Block. 6. **Water Pump** to Front Cover. 7. **Oil Filter (C)** to Block. 8. 2 **Valve Covers (C)** to Heads. 9. **Carburetor (C)** to Manifold. 10. **Distributor** to Manifold. 11. **Air Cleaner (C)** to Carburetor. 12. **Alternator (C)** to Pulleys. 13. **Stock Pulleys** to Water Pump. 14. **Fan (C)** to Pulleys. 15. 2 **Exhaust Manifolds** to Heads. 16. **Radiator Hose** to Manifold.

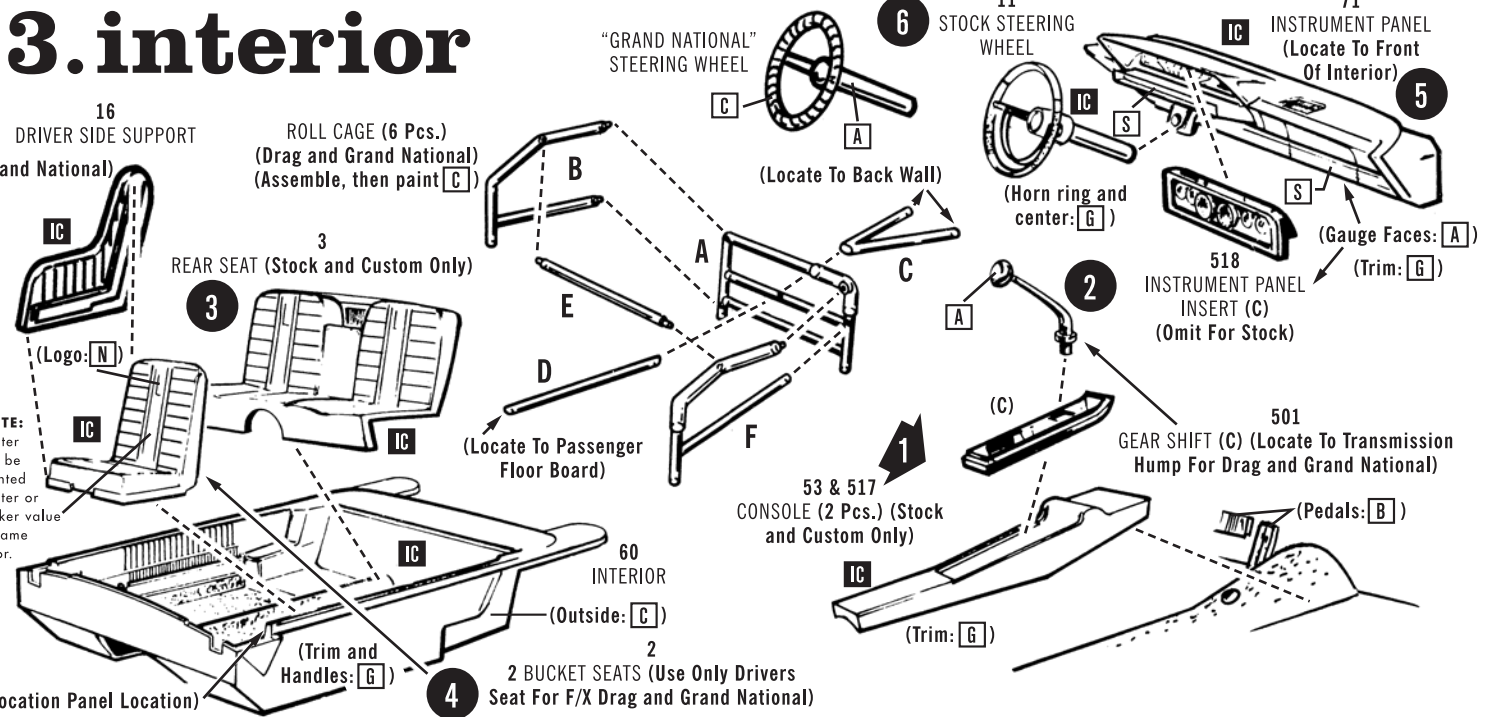


1. Cement the **Engine Block** together. 2. **Oil Pan** to Block. 3. **Oil Filter (C)** to Block. 4. **Cam Drive Cover (C)** to Block. 5. **Dual Carb Intake Manifold (Custom and Drag) (C)** to Block. 6. 2 **Heads (C)** to Block. 7. 2 **Cam Covers (C)** to Heads. 8. 2 **Carburetors (C) (Custom and Drag)** to Manifold. 9. 2 **Velocity Stacks (C) (Custom)** or 2 **Carburetor Air Ducts (Drag)** to Carburetors. 10. **Radiator Hose** to Manifold. 11. **Alternator (C)** to Pulleys. 12. **Overhead Cam Pulleys** to Cam Drive Cover. 13. **Fan (C)** to Pulleys. 14. **Distributor** to Manifold. Note: For the "Grand National" version, substitute the "**High-Rise Intake Manifold**" and "**Grand National Air Cleaner (C)**" for the Dual Carb Set-Up. Do not install Carburetor Air Ducts or the "Grand National" Air Cleaner until the final racing assembly.

2.chassis-wheels



3.interior



4.body

