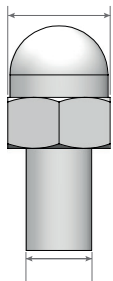


DCL-PAR129

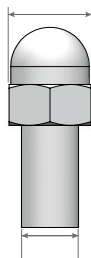
Instructions

Ø 1.25 mm



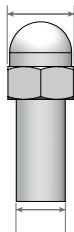
Ø 0.8 mm

Ø 1.0 mm



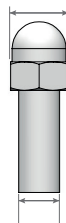
Ø 0.7 mm

Ø 0.8 mm



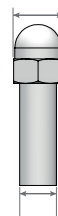
Ø 0.6 mm

Ø 0.7 mm



Ø 0.5 mm

Ø 0.6 mm



Ø 0.45 mm

Ø 0.5 mm



Ø 0.4 mm

Paints required:



STEEL

(N5-C054 by Number Five)

NOTE:



This parts faithfully reproduce the head but lack the threads, they are not real screws.