

Falcon Scale Models



Honda RA272 - rear suspension and driveshafts set (Tamiya 20043)

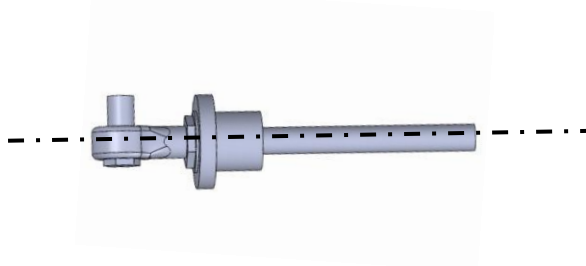
Catalog no.: FSM C6

Installation guide

Cut all parts with sharp cutters like Tamiya 74123. Do not break off parts.

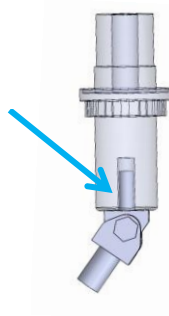
Shock absorber

1. Cut metal rod to the length of 8.5 – 9.0 mm and sand both ends in order to remove flattened edges after cut.
2. Glue prepared rod into the top section of the shock absorber using CA glue. Take a note that rod must be placed in one line which the cylindrical hole in which it is installed.

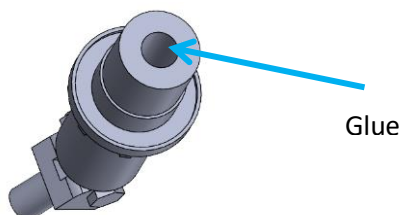


3. Glue the bottom of the shock absorber to the angular connector.

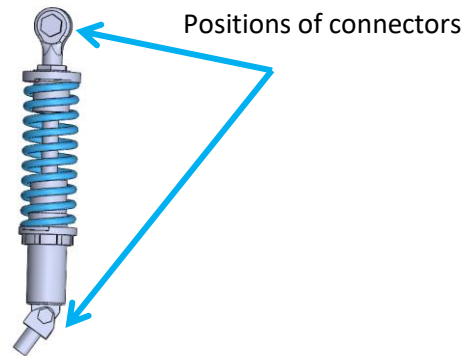
Thin



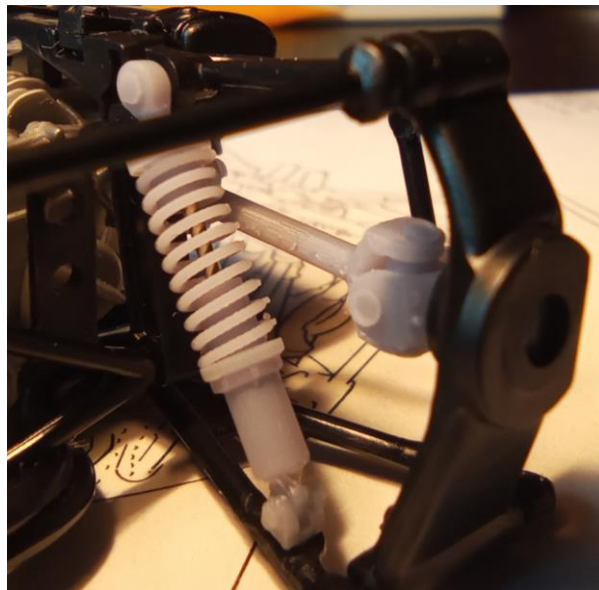
4. Put small amount of water based glue like Micro Crystal Clear or Tamiya Craft Bond into the top hole of the bottom of the shock absorber.



5. Install the spring on the bottom section of the shock absorber.
6. Connect the bottom of the shock absorber with the top one created in point 2. Check the positions of top and bottom connectors, as reference use part from the base kit. Remember that shock absorber is installed on right and left side with different positions of the connectors.



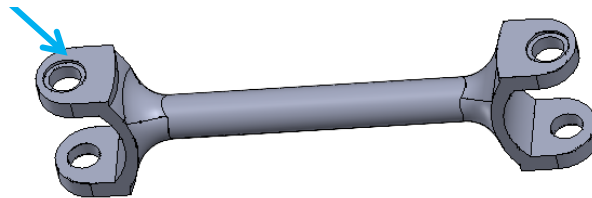
7. When the glue is still operational install the shock absorber into the model. Put bottom connector in the first step and then position the top section. If needed extend and fix the spring with water based glue (Micro Crystal Clear or Tamiya Craft Bond).



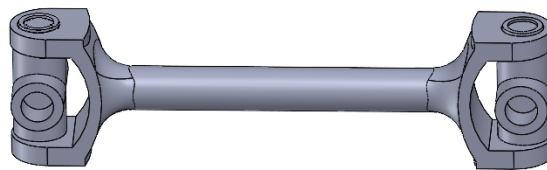
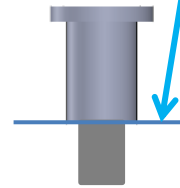
Drive shaft

1. Cut off the pin from the support. Install the cross in the central shaft and fix it with pins (2 on each side). If needed apply small amount of glue (CA/Micro Crystal Clear/Tamiya Craft Bond) depending of you preferences on the top side of the shaft where the pin is installed. **Remember not to apply glue between shaft and the cross as it will prevent the elements to move.**

Glue application area



Cutting line



2. In the similar way (using pins) install side parts of the driveshaft.
3. During installation take a note on the direction of installation (gearbox – wheel sides). It is suggested to install driveshaft during final suspension assembly (step 16).

