

Falcon

Scale Models

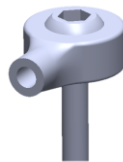


1/12 steering damper set for Yamaha YZR M1 2004
Ref. item no. Tamiya 14098, 14100

Catalog no.: FSM 16

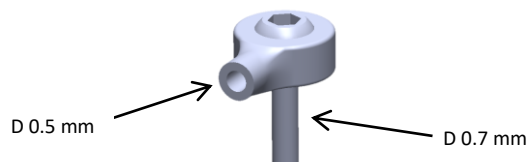
Installation guide

Cut of all parts with the use of sharp cutter (like Tamiya 74035 Sharp Pointed Side Cutter). DO NOT break off parts from the supports as you can damage them. Take special care of:



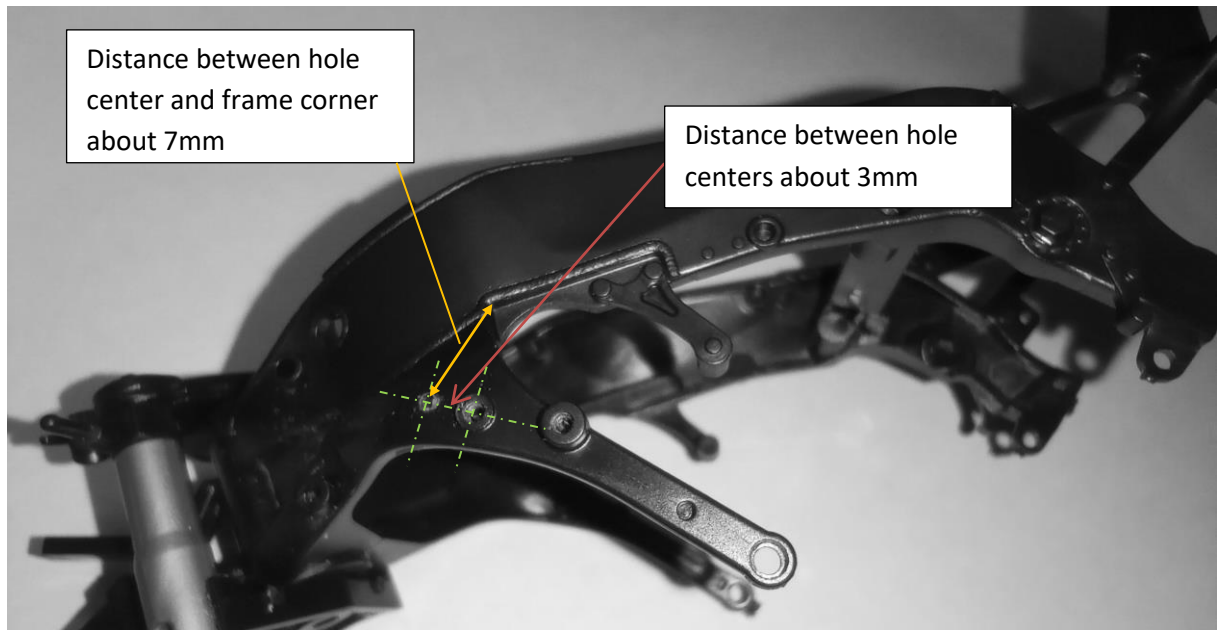
as it has installation pin at the bottom.



1. Use 0.5 mm drill to correct the rod installation hole before inserting metal rod.


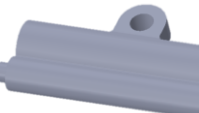



The edges of metal rod should be sanded as after cut they are sharp. Set final length of the metal rod after final assembly at extreme right turn. In this position damper is placed as close as possible to the end of the metal rod. The metal rod should be up to 2mm longer than the damper position at extreme right turn.



2. On the left side of a frame drill 0.7mm hole for installation of the metal rod handle from point 1 as in the picture below. Take a note that element should rotate easily. DO NOT GLUE THIS PART TO THE FRAME.



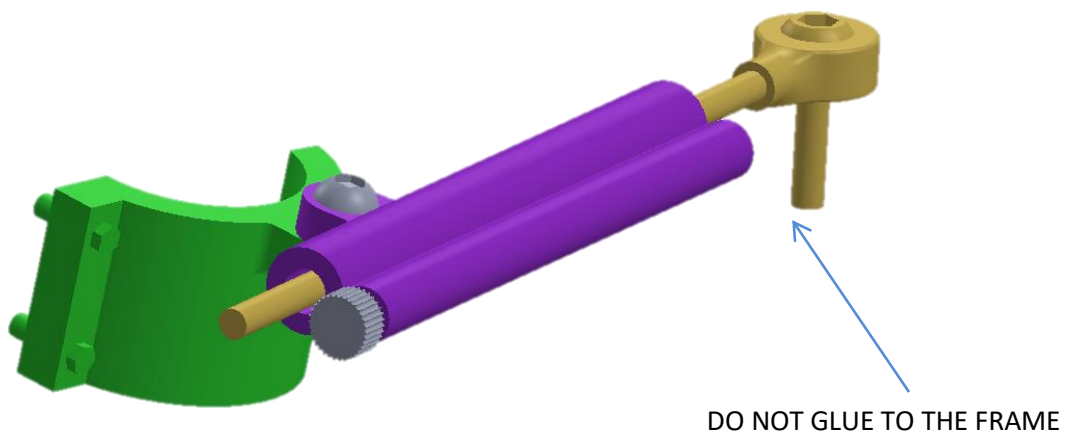
3. Use  to replace A10 part of the left side and  to replace A10 on the right side.

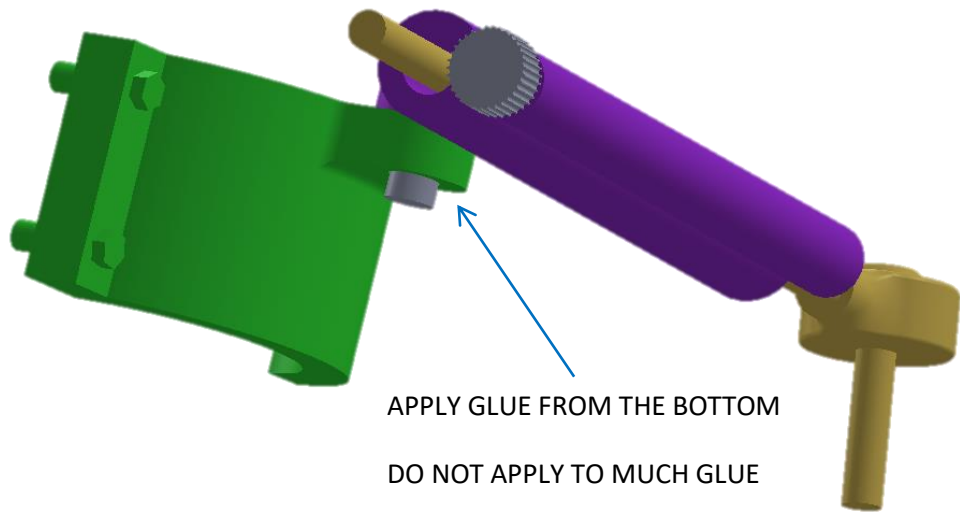
4. Use cap  to cover the damper edge .

5. Insert metal rod into 0.5mm hole in the handle and then attached this set to the frame, finally slip on  damper part.

6. Connect damper and front fork left side part with a screw . APPLY GLUE FROM THE BOTTOM of .

DO NOT APPLY TO MUCH GLUE as damper MUST rotate around the screw.





APPLY GLUE FROM THE BOTTOM

DO NOT APPLY TO MUCH GLUE

as damper MUST rotate.